



EFFRA NEWSLETTER

Effingham Residents Association

Issue 10

November 2019

Effingham Remembers

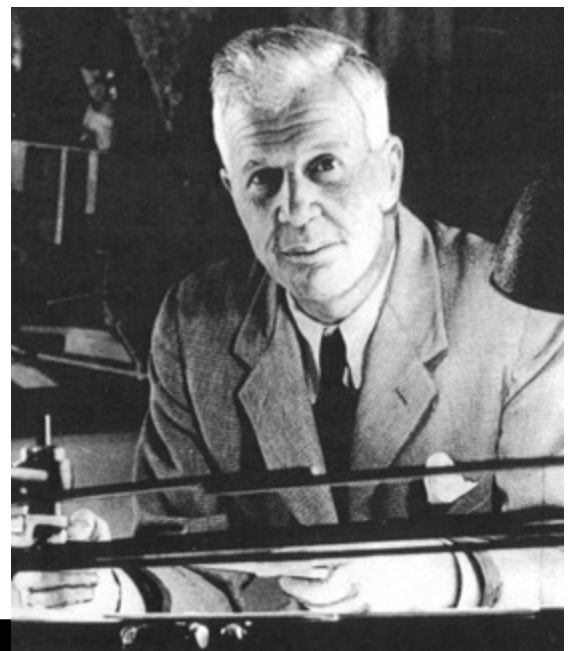
Sir Barnes Neville Wallis

our famous resident 40 years after his death

26th September 1887 to 30th October 1979

A brilliant and nationally renowned engineer and inventor, he was an Effingham resident for nearly 50 years and contributed to the village including being St Lawrence Church Parochial Church Council Secretary for eight years, Parish Chairman for ten years, a purchasing trustee of the KGV Playing Fields and co-founder of the Effingham Housing Association.

Village commemorations included an exhibition put on by EFFRA at Little Bookham Tithe Barn on 14th September and a talk by Robert Owens, Historian of the 617 Squadron Association on 25th October at St Lawrence Church.



IN THIS ISSUE

Effingham remembers Sir Barnes Neville Wallis 40 years after his death

Latest news on proposed developments
– Berkeley Homes/
Howard School
– Church Street Field

Effingham Common may become a Local Nature Reserve

Conservation Area Appraisal

Join EFFRA's email list

INSERT TO THE ISSUE

Effingham Tradesmen's Register 2019 - 2020



Follow us at: www.effinghamresidents.org.uk



LATEST NEWS ON PROPOSED DEVELOPMENTS

BERKELEY HOMES /HOWARD SCHOOL DEVELOPMENT

Reserved matters planning application for the school (19/P/01451)

As outline approval was given by the Planning Inspector and Secretary of State on 21st March 2018, an application covering only reserved matters (ie. those details not approved by the Inspector and Secretary of State) was submitted in early September with public consultation closing on 4th October but extended to 14th October. It is likely to go to the Guildford Borough Council Planning Committee on 4th December.

There were 48 objections and 1 support at the date of this Newsletter going to print.

The main objections are that the application is materially different from what was agreed in the Appeal decision:

- Change in boundary of school with two areas of land taken out, on which Berkeley has said it proposes to apply for a 55 further houses on, resulting in:
 - Sports pitches packed closely together and little run-off between them.
 - Green Gap between Effingham and Little Bookham virtually eliminated contrary to National Planning Policy Framework on Green Belt and the Inspector's intention.
 - Loss of views through from Lower Road to Thornet Wood.
- Poor, urban design of the school buildings which are unsympathetic to the local semi-rural character.
- Parking provision unsatisfactory.
- No Wildlife Corridor on eastern boundary as designated in Effingham Neighbourhood Plan with harmful lighting to this area.

Reserved Matters Planning Application for 159 Dwellings on Effingham Lodge Farm (19/P/01760)

Submitted in late October, public consultation closes on 22nd November and it is likely to be considered at the GBC Planning Committee on 8th January 2020.

There were no comments at date of printing.

This application follows more closely what was agreed by the Inspector but EFFRA is concerned that, contrary to the Inspector's decision, two additional vehicular accesses from Lower Road are proposed in addition to the main access road which will cross the cycle route and also increase traffic congestion. There are also concerns about lack of green spaces and views through the site, parking and heights of buildings.

Discharge of Conditions (18/D/00174/1)

Submitted in late October these applications are to discharge conditions laid down by the Inspector on matters such as sewage, surface water drainage, transport plans and construction methods. GBC decides these and does not need to consult residents. However, EFFRA and the Parish Council and others have expressed concern about the content of some documents. The drainage proposals and the proposed construction vehicle route through The Street and through the mini-roundabouts passing St Lawrence Primary School are of particular concern. It was indicated at the Appeal and in discussions with Berkeley Homes that the construction route would be from the north down Effingham Common Road thus avoiding the village centre and schools. Disappointingly, at the time of printing Surrey County Council (SCC) Highways had accepted the routing. SCC has not accepted the Sustainable Urban Drainage System (surface water drainage) as satisfactory and Thames Water has not accepted the sewage proposals.

CHURCH STREET FIELD PLANNING APPLICATION

A planning application was resubmitted for the former St Lawrence Playing fields in Church Street in early October. The number of dwellings has only been reduced to 20 from 23 and is still contrary to the Effingham Neighbourhood Plan maximum number of 9. In EFFRA's opinion it would seriously damage the Conservation Area if agreed. Both EFFRA and the Parish Council have made strong objections.

Public consultation ended on 15th November (although late comments are usually accepted) and it is expected to go to the Planning Committee on 8th January 2020. At the time of going to press there were 11 objections and 3 supports.

Cover Pictures

Bottom right: Sir Barnes' daughter Elisabeth and four of his grand-daughters with an exhibition organiser. Remaining photos of Sir Barnes and family from exhibition commemorative booklet.

Follow us at: www.effinghamresidents.org.uk



EFFINGHAM COMMON MAY BECOME A LOCAL NATURE RESERVE

Effingham Parish Council is considering asking for the part of Effingham Common owned by Guildford Borough Council (GBC) to be designated as a Local Nature Reserve (LNR). GBC, as the designating authority, has indicated that it is supportive of formally designating the site. EFFRA and the Friends of Effingham Common are also in favour.

Although Effingham Common is already registered Common Land, and people have the right of access on foot to the land under the CROW Act 2000, designating it an LNR will have the following advantages:

Development around the Common would need to take into account their impact on the nature reserve. Currently there is no requirement for the impact on wildlife to be taken into account.

Management – the designated land would have to be managed as a nature reserve. Currently, although GBC is attempting to improve wildlife habitats, it is under no obligation to do so. It is also less likely that more furniture such as benches will be added.

Usage – it would clearly indicate to visitors to the Common that the wildlife is important, and may help to reduce inappropriate behaviour.

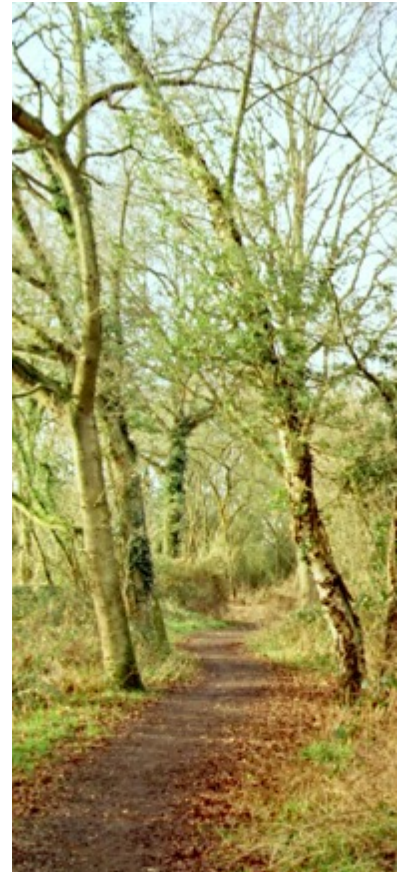
Car Park – designating the site as a LNR will reduce the risk of a car park being installed.

Wildlife corridor – will be better protected by the designation as a nature reserve.

Bylaws – Guildford Borough Council would be able to introduce bylaws to protect wildlife.

What do you think?

Post your comments on our website or email the parish clerk at clerk2010@effinghamparishcouncil.gov.uk



CONSERVATION AREA APPRAISAL

In late 2018 Guildford Borough Council began an appraisal of our Conservation Area. Some residents with relevant knowledge and expertise assisted the GBC Heritage Officers and it was planned to put the Appraisal out to consultation in early autumn. Disappointingly, this has not happened as GBC says its priorities have changed because of its work load and it now has no timeframe for the consultation.

This appraisal is particularly important now that much of our Conservation Area is in the inset area and the appraisal will help to properly take account of heritage issues in deciding planning applications. Consequently, EFFRA has asked GBC to reconsider and reschedule the consultation as soon as possible and the Parish Council has also said it will take the same course of action.

JOIN EFFRA'S EMAIL LIST!

Residents on our email list are emailed on an occasional basis (maybe 3 to 5 times a year) about important issues – such as planning applications for the Berkeley Homes development. Having a list of committed members also makes EFFRA's voice more powerful when we raise issues or objections with our local authorities as EFFRA does not charge membership subscriptions.

We protect your personal data, and do not share your data within anyone else. We only use your email address to inform you of things of interest to Effingham residents, such as major planning applications. We only use your postal address to confirm you live in or around Effingham. You can unsubscribe at any time, by sending an email to info@effinghamresidents.org.uk, and we will delete your details.

To join the list email your name and address to info@effinghamresidents.org.uk. There will also soon be a form on our website.

Join us and make your voice heard!

Follow us at: www.effinghamresidents.org.uk



The Effingham Residents Association exists to protect residents' interests, help in dealing with concerns affecting Effingham and encourage residents to take an active part in local affairs.

Currently membership is free of charge and automatic for all residents. Our constitution is available on our website www.effinghamresidents.org.uk The Secretary can be contacted at 01372 454003

EFFRA Committee

Vivien White	Chairman		
David King	Secretary) officers	Howard Manton	
Juliet Newton-Smith	Treasurer)	Diane Poole	Bookham Liaison
James Brennan	Road wardens Co-ordinator	Ian Smith	Vice-Chairman
Harry Clarke	Website Editor	James Wettenhall	

EFFRA, 5 Orchard Gardens, Effingham, Surrey KT24 5NR.

ADVERTISEMENTS



*Traditional
Candlelit Carol Service*

**Wednesday 4 December 6.30 pm
St Mary's Church, Fetcham**

Followed by a drinks reception at historic Fetcham Park (adjacent to the church)

In aid of Transform Housing & Support helping local homeless and vulnerable people
For more information about the charity please visit www.transformhousing.org.uk

 **EST. 1705 FETCHAM PARK** 



MPS
GARDEN MACHINERY

The Old Forge, Church Street, Effingham, KT24 5LY

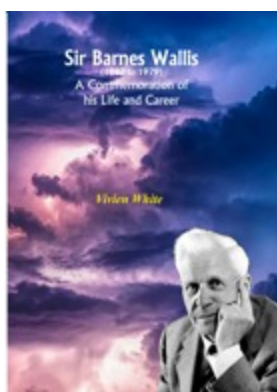
As one of our existing customers we would like to offer you this
Winter Servicing 10% Discount
If you book before **21st December 2019**
Call 01372 453411 or email enquiries@mps-gardenmachinery.co.uk

STIHL BATTER HILTI ATCO Kawasaki Mopar Husqvarna EGO ALKO CUT BEVERLY



BEVAN'S BUTCHERS

MEAT DELICIOUSLY CURED CURE PICKLED & LAMB HOT



Sir Barnes Wallis A Commemoration of his Life and Career

The booklet that accompanied the exhibition, with many previously unseen photographs.

Paperback size: 210x297 32pp

Available at Parker & Son, The Street, Effingham, the Wishing Well, Great Bookham High Street and the Surrey History Centre, Woking

or by post from EFFRA plus £1.50 p&p. **£5**
For more information contact the Secretary at the above address



Follow us at: www.effinghamresidents.org.uk

